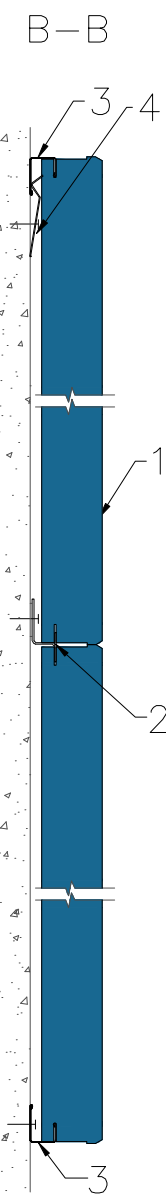
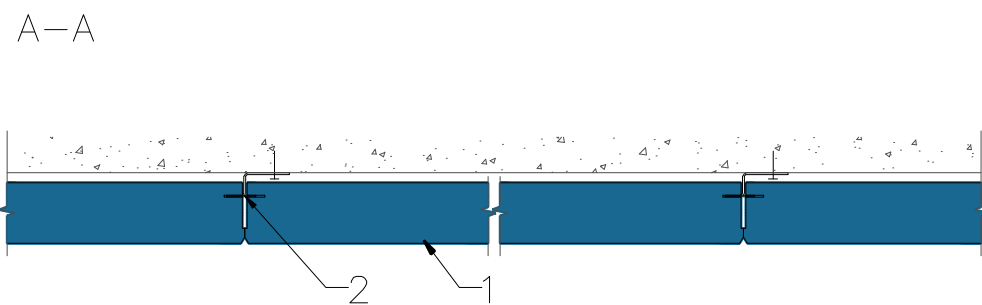


1. Tile ROCKFON, edge C
2. G-hook
3. J-profile 13x3050 white
4. SMF clamp



All screws and other fastenings shown are indicative and illustrative only.
Specific fasteners should be chosen dependent on substrates and materials being used.

Information: Acoustic regulation without a complete suspended ceiling – wall absorber Sonar C on G hooks and J profile	Date: 05.04.2014		Drawing Type:	
	Drawing No.: 2.2.1.Islands-wall-absorbers--baffles		Drawn by:	Scale: 1:5
	Contact Information:			
We kindly draw your attention to the fact that the above drawings should be considered as guidelines and therefore are without responsibility on the part of Rockfon.				

