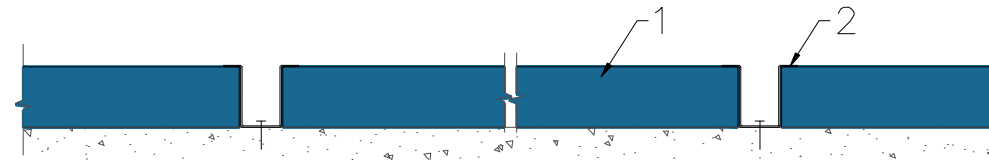
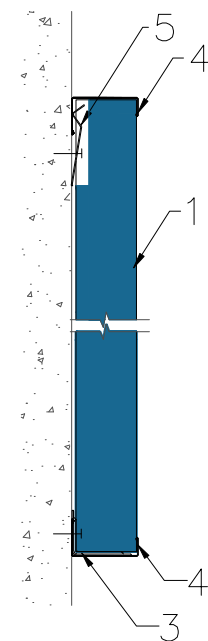


1. Tile ROCKFON SAMSON
2. Hat profile (1mm)
3. Angle bracket for coff frame
4. J-profile 40x3050 white
5. SMF clamp

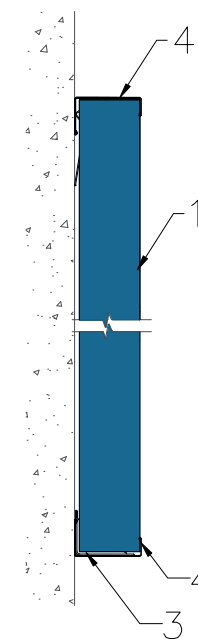
A-A



B-B ex.1



C-C ex. 2



All screws and other fastenings shown are indicative and illustrative only.
Specific fasteners should be chosen dependent on substrates and materials being used.

Information:
Acoustic regulation without a complete suspended ceiling – wall absorber Samson, hat and J-profile

Date:
05.04.2014

Drawing Type:

Drawing No.:
2.2.2.Islands-wall-absorbers--baffles

Drawn by:

Scale:
1:5

Contact Information:

We kindly draw your attention to the fact that the above drawings should be considered as guidelines and therefore are without responsibility on the part of Rockfon.

Rockfon[®]