

1. Tile ROCKFON FLECTOLINE
2. Tile ROCKFON SONAR A
3. Flectoline profil
4. Main runner DX24 3700mm
5. Cross tee DX24 1200mm
6. Perimeter angle trim
7. Adjustable hanger
8. Pin
9. Metal tape

All screws and other fastenings shown are indicative and illustrative only. Specific fasteners should be chosen dependent on substrates and materials being used.

Information:

Light from windows – Flectoline \varnothing 400mm S-line, level shift 400mm

Date:

Drawing No.:

Contact Information:

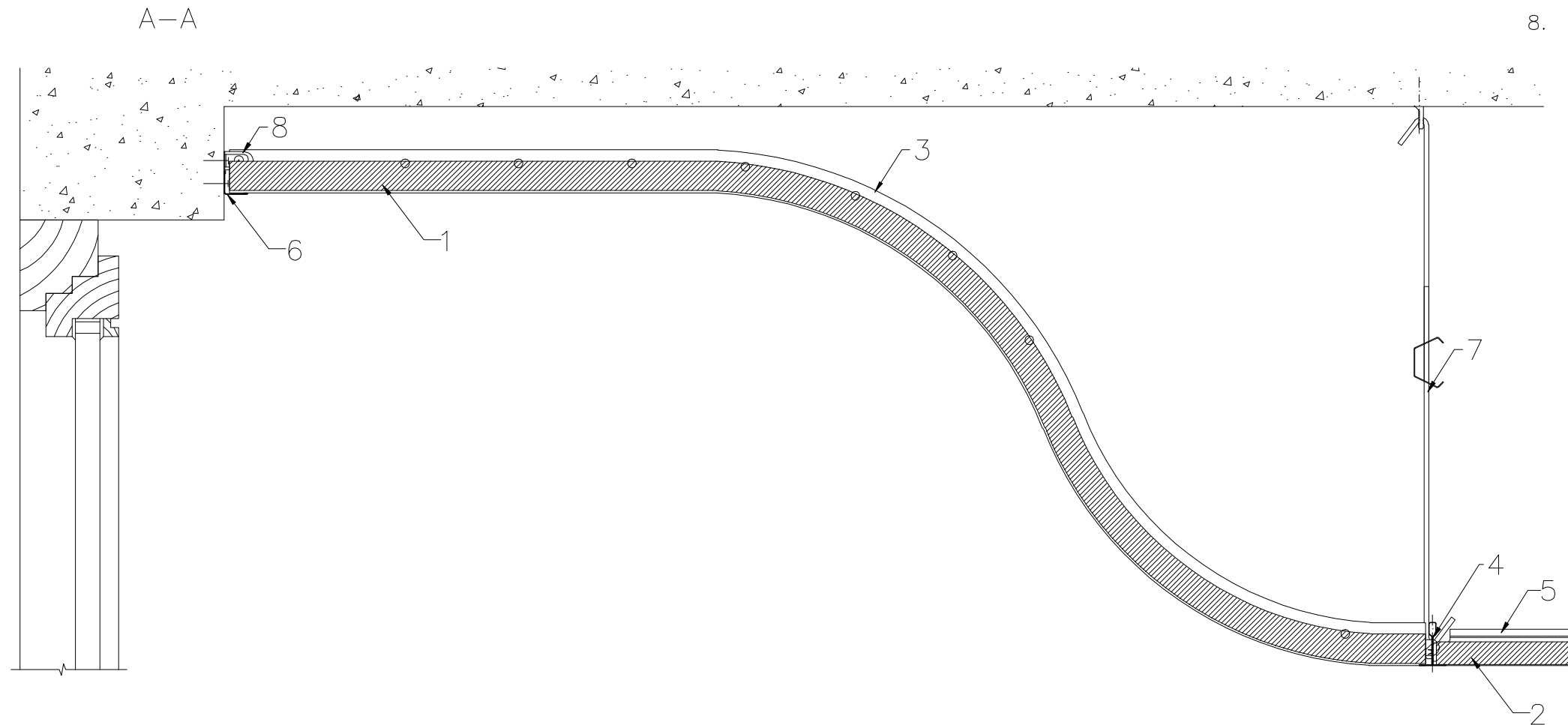
Drawing Type:

Drawn by:

Scale:
1:10

Rockfon
ACTIVATE YOUR CEILING

1. Tile ROCKFON FLECTOLINE
2. Tile ROCKFON SONAR A
3. Flectoline profil
4. Main runner DX24 3700mm
5. Cross tee DX24 1200mm
6. Perimeter angle trim
7. Adjustable hanger
8. Angle bracket



All screws and other fastenings shown are indicative and illustrative only.
 Specific fasteners should be chosen dependent on substrates and materials being used.

Information: Light from windows – Flectoline ø400mm S-line, level shift 400mm	Date:		Drawing Type:	
	Drawing No.:		Drawn by:	Scale: 1:5
	Contact Information:			



We kindly draw your attention to the fact that the above drawings should be considered as guidelines and therefore are without responsibility on the part of Rockfon.