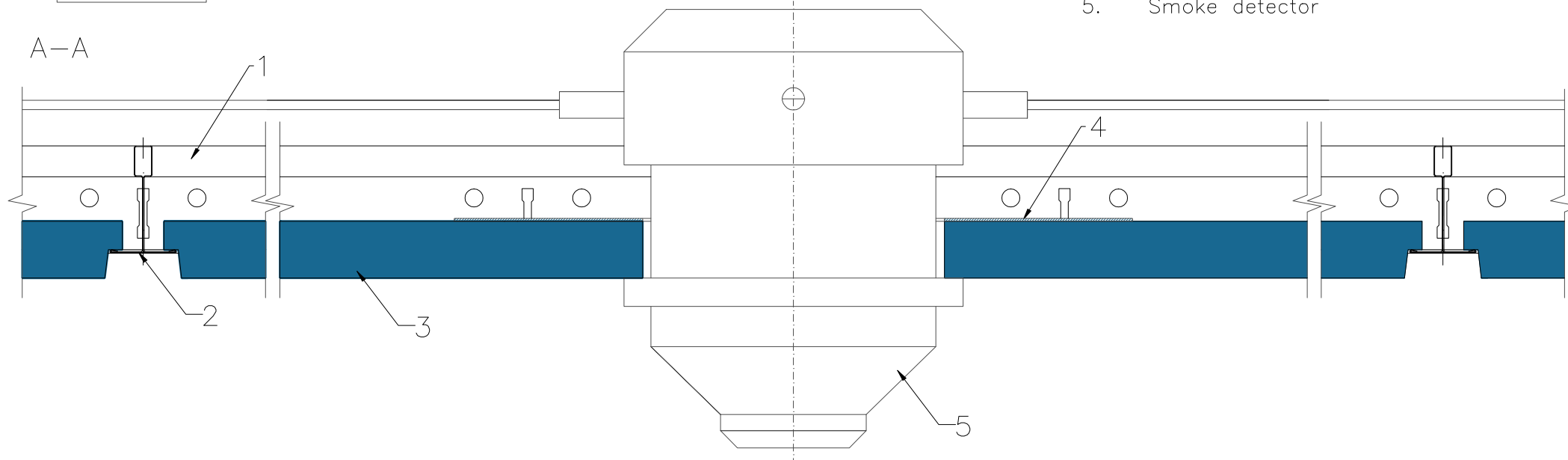


1. Tile ROCKFON, edge E
2. Mainrunner T24 C/H38 3600 white
3. Cross Tee T24 C38 1200 white
4. Metal or similar yoke
5. Smoke detector



This solution is applicable for smoke detectors (services) weighing <0,25kg. Cut hole in tile. Use small metal yoke to spread load on to back of tile. Fit smoke detector into tile and yoke.

Metal or similar yoke (4):
 Min. $\phi = 2 \times \phi$ of light,
 Min. thickness = 0,6mm.

All screws and other fastenings shown are indicative and illustrative only. Specific fasteners should be chosen dependent on substrates and materials being used.

Information: Smoke detector integration	Date: 10.04.2014		Drawing Type:	
	Drawing No.: 4.3.2.Lighting-ventilation-etc.		Drawn by:	Scale: 1:2
	Contact Information:			

We kindly draw your attention to the fact that the above drawings should be considered as guidelines and therefore are without responsibility on the part of Rockfon.