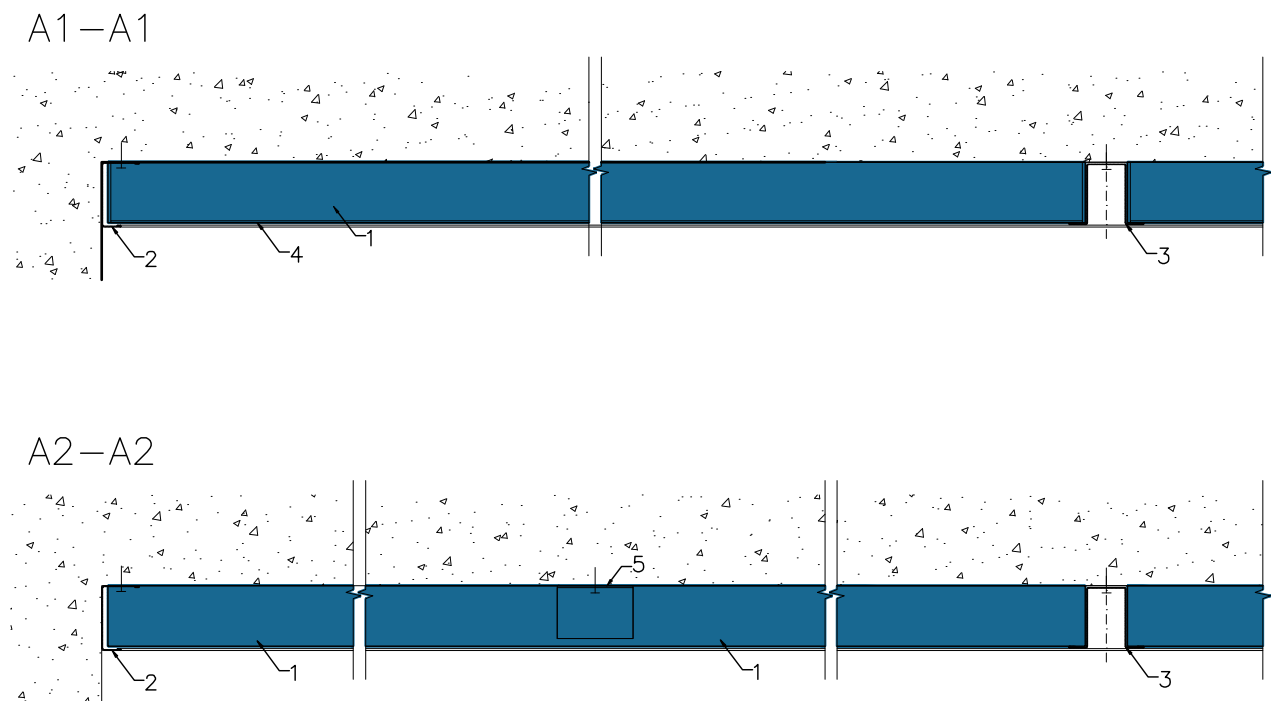


1.	Tile VertiQ A HAT 1200x1200 [mm]
2.	Perimeter trim – 40 mm J channel 3050 mm
3.	HAT channel 40 mm high, 0,5 mm thick, 12,5/25,0/12,5 [mm], 2700 mm
4.	HAT channel 40 mm high, 0,5 mm thick, 12,5/25,0/12,5 [mm], 1162 mm (cut to size from 2700 mm)
5.	Supporting bracket 15x35x50 mm

Full scale drawing is available in model space



All screws and other fastenings shown are indicative and illustrative only. Specific fasteners should be chosen dependent on substrates and materials being used.

Information:

Date:  
11.01.16

Drawing Type:

Drawing No.:  
30.2.1. VertiQ HAT A wall

Drawn by:

Scale:  
1:5

Contact Information:

**Rockfon**<sup>®</sup>

We kindly draw your attention to the fact that the above drawings should be considered as guidelines and therefore are without responsibility on the part of Rockfon.