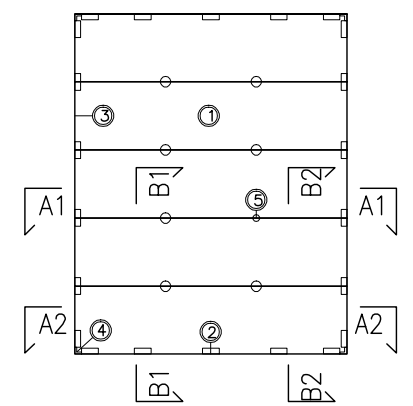
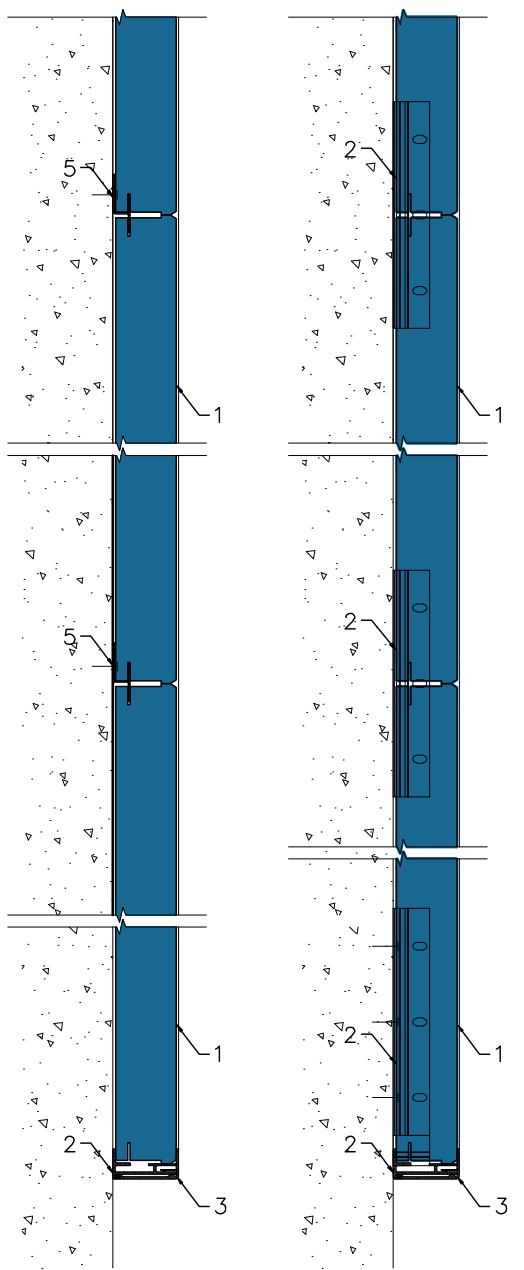


B1-B1

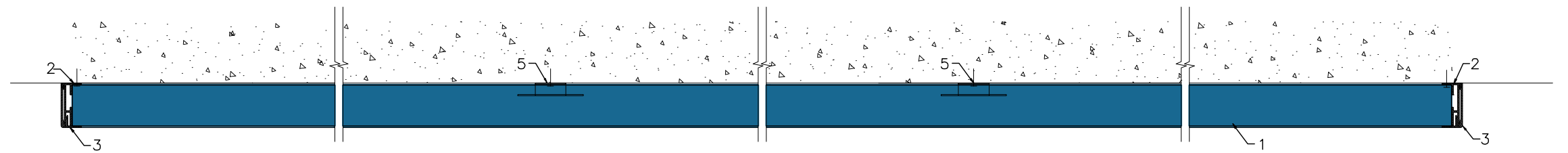
B2-B2



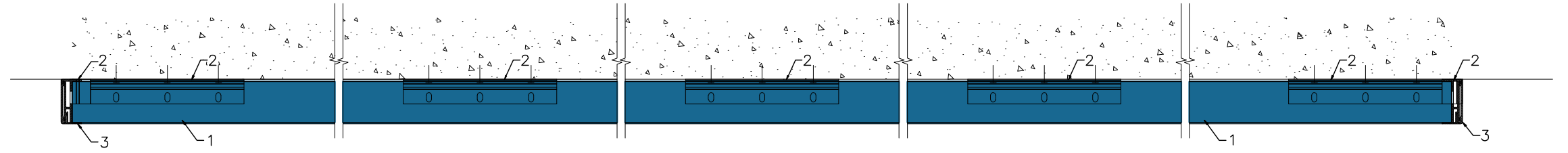
Full scale drawing is available in model space

1.	Tile VertiQ C, 2400x600x40 mm
2.	Fixing bracket 150x42x19 mm (aluminium)
3.	Perimeter cover profile 2380x43.5x20 mm (anodized aluminium)
4.	External corner connector 43.5x20x20 mm (anodized aluminium)
5.	Supporting-fixing H8Q bracket

A1-A1



A2-A2



All screws and other fastenings shown are indicative and illustrative only. Specific fasteners should be chosen dependent on substrates and materials being used.

Information:

We kindly draw your attention to the fact that the above drawings should be considered as guidelines and therefore are without responsibility on the part of Rockfon.

Date:	12.01.2016	Drawing Type:	
Drawing No.:	30.4.2. VertiQ C Wall	Drawn by:	
Contact Information:		Scale:	1:5

